



**Partageaction**  
West Island Community Shares

# ANNUAL REPORT

## 22/23

YEAR ENDING MARCH 31, 2023

CHARITABLE ORGANISATION NUMBER # 870517992RR001

Photo by : Wassim Shomali

# BUILDING A STRONG, RESILIENT, INCLUSIVE AND HEALTHY WEST ISLAND

---



# TABLE OF CONTENTS

|   |       |
|---|-------|
| WORDS FROM OUR EXECUTIVE DIRECTOR & PRESIDENT | 4     |
| OUR 25 YEAR STORY                             | 5     |
| WEST ISLAND COMMUNITY SHARES OVER THE YEARS   | 6 - 7 |
| HIGHLIGHTS OF THE YEAR                        | 8     |
| REVENUE HIGHLIGHTS                            | 9     |
| FUND DISTRIBUTION IN NUMBERS                  | 10    |
| IMPACT OF YOUR GIFT                           | 11    |
| SUPPORT VULNERABLE & MARGINALIZED POPULATIONS | 12    |
| FOSTER HEALTHY BODIES & MINDS                 | 13    |
| DEVELOP STRONG, RESILIENT CHILDREN & TEENS    | 14    |
| EMPOWER WOMEN                                 | 15    |
| SUPPORT GREEN INITIATIVES                     | 15    |
| PROVIDE BASIC NECESSITIES                     | 16    |
| SNOWSUIT CAMPAIGN                             | 16    |
| CREATING LASTING RELATIONSHIPS                | 17    |
| EVERYONE CAN HELP, HERE'S HOW                 | 18    |
| OUR PARTNERS                                  | 19    |
| JOIN US FOR THE NEXT 25 YEARS                 | 20    |



# WORDS FROM OUR EXECUTIVE DIRECTOR & PRESIDENT

## EXECUTIVE DIRECTOR

It is an exciting time to take on the role of Executive Director at West Island Community Shares – especially as we celebrate our 25th year. For the last 10 years, I have been working in the West Island community sector and it has shown me that people in our neighbourhoods are struggling. Whether it be with meeting their basic needs, mental health, isolation, and so much more. It has also taught me that our community needs us!

I am so proud to join Community Shares and support our community during this historic time. We look forward to continuing to serve West Islanders with the generosity of our corporate partners, individual donors, and foundations.

-Meagan Somerville



## PRESIDENT

The generosity of our community is incredible. As we reach a new financial record in year 25, it is clear that together we are having a meaningful impact in the West Island.

The Board and I are delighted to have brought Meagan into this great team, and we want to thank Sophie McCann, who moved on from being our Executive Director in the summer of 2023. During her tenure, we made extraordinary progress and we are grateful for her amazing work.

I hope you will join me in celebrating this impressive 25-year milestone and looking forward to the next 25!

-Frederica Jones



(BACK ROW, LEFT TO RIGHT)  
**MEAGAN SOMERVILLE**  
EXECUTIVE DIRECTOR

**SARA SORIAL**  
FINANCE

(FRONT ROW, LEFT TO RIGHT)  
**NYNKE WIJNALDA**  
DONOR RELATIONS

**DANIELLE LEGGETT**  
COMMUNITY IMPACT

(ABSENT FROM PICTURE)

**RACHA AOUDE**  
EVENTS

**CLAUDE GAGNÉ**  
COMMUNICATIONS



# OUR 25 YEAR STORY

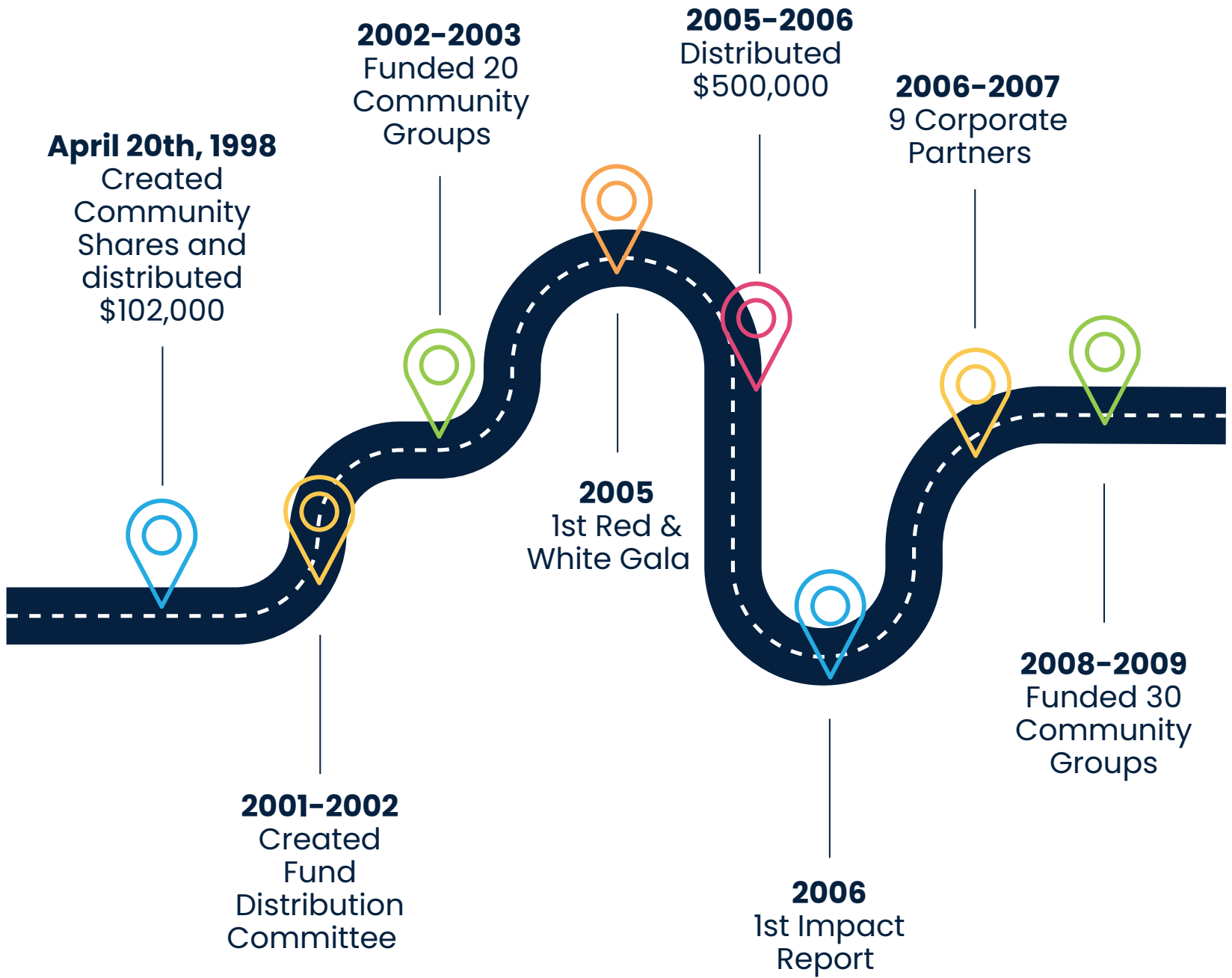


25 years ago, our founders dared to dream: they imagined a community where individuals, businesses, local government, and community groups worked together to address social issues. The idea was that locals could give back to their own neighbours and people of different cultural backgrounds, languages and socio-economic status so that we can all live side-by-side in harmony.

The goal then and now has always been **TO BUILD A STRONG, RESILIENT, INCLUSIVE AND HEALTHY WEST ISLAND COMMUNITY**. Our rich history shows us that together we can make a difference and that the needs in our community are ever-changing. As we celebrate our 25th year anniversary, we are filled with pride as we continue to be united in helping those in need on the West Island. Our work is not done, we will continue to be innovative, dedicated, and focused on the future.

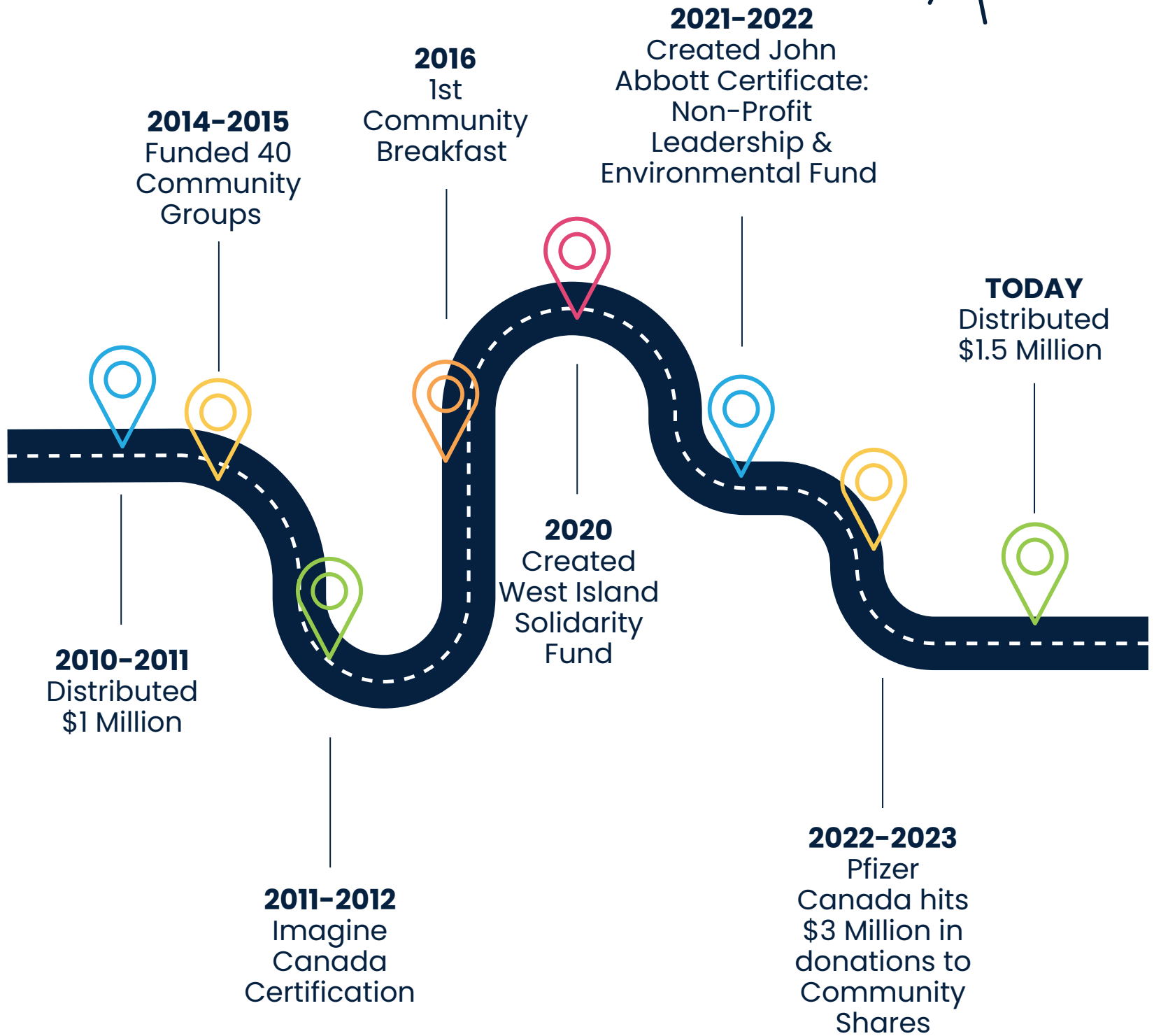


# WEST ISLAND COMMUNITY SHARES





# OVER THE YEARS





# HIGHLIGHTS OF THE YEAR

*One united  
community*

**355**

New Donors

**\$1.5**

*million*

Funds  
Distributed

**2,694**

Different  
donations  
received

**35 +**

Generous corporate  
partners and private  
foundations

**40 +**

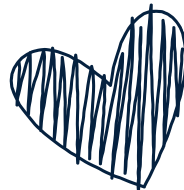
Community Groups



**1**

New  
Community  
Group

FabZone



*Donors with big hearts*



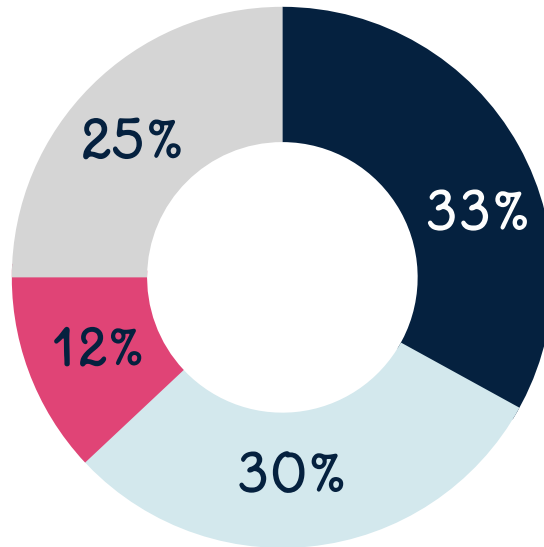




# REVENUE HIGHLIGHTS

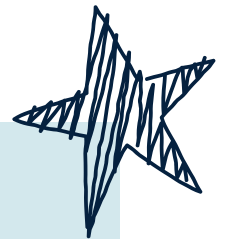
**Private Foundations**

**Public Donations**



**Fundraising Events**

**Corporate Contributions**



## Board Members

**Frederica Jones**  
Board President

Michel Béland  
 Teresa Broccolini  
 Chantal Carrier  
 Nouha Fadlallah  
 Jacques Garceau  
 Peter Giakoumatos  
 Roberta Lacey  
 Vincent Lamoureux

Sara Lande  
 Danielle Leggett  
 Roger Morin  
 Claude Papsian  
 Jean-René Paquette  
 Sandy Sey  
 Ali Souini  
 Drew Wawin

## Social Media Highlights



**8,022**  
Facebook followers



**1,393**  
Instagram followers

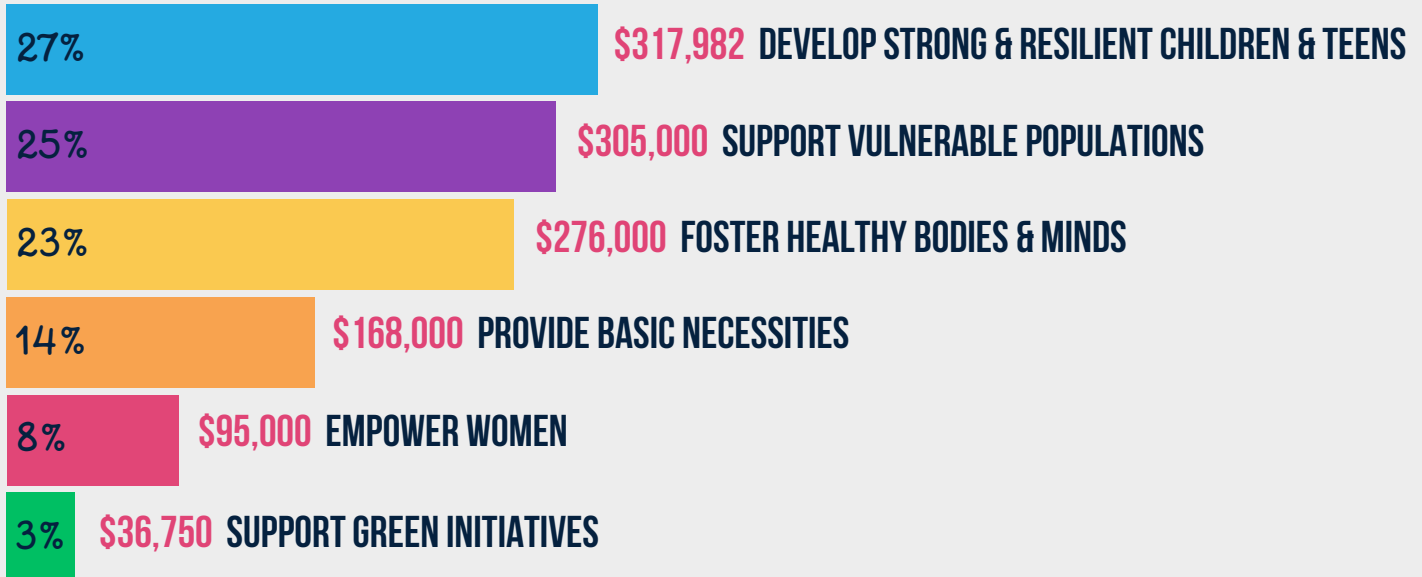


**1,091**  
LinkedIn followers



# FUND DISTRIBUTION

Ten volunteers and three staff members make up the Fund Distribution Committee whose purpose is to ensure that your donation is disbursed where it will have the largest impact on our community. Your donation is invested in more than 40 community organisations that provide crucial services in these six areas.



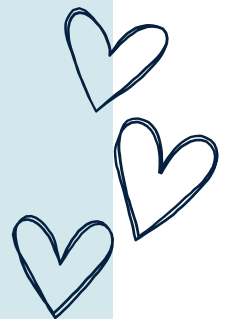
## Fund Distribution Committee

**Chantal Carrier**  
President

**Danielle Leggett**  
Committee Director

Hélène Allaire  
Christina Antoniou  
Nick Di Staulo  
Catharine Harris  
Sophie McCann  
Nathalie Ouimet

Regina Nowak  
Fabrizio Piccinini  
Robert Rafuse  
Anne Smith  
Nynke Wijnalda





# IMPACT OF YOUR GIFT

## THE IMPACT OF YOUR GIFT

WE INVEST IN 6 KEY-AREAS TO SUPPORT MORE THAN 40 COMMUNITY ORGANISATIONS



SUPPORT  
VULNERABLE  
POPULATIONS



DEVELOP STRONG &  
RESILIENT CHILDREN  
AND TEENS



FOSTER HEALTHY  
BODIES & HEALTHY  
MINDS



PROVIDE BASIC  
NECESSITIES



EMPOWER  
WOMEN



SUPPORT  
GREEN  
INITIATIVES

As we celebrate twenty-five years of giving in the community, one thing is clear - our donors' unwavering commitment to our cause has never been stronger.

This report underscores how your generosity allows us to support over 40 West Island community organisations. These groups are meeting the needs with passion and commitment; whether it be due to the pressures on our health care system, labour shortages, lack of affordable housing, or rising costs of goods and services.

Without a doubt, your trust in us has had a transformative impact. We extend our heartfelt gratitude to every donor who has stood by our side as we navigate the challenges of our time, and we thank you for your ongoing support as we continue to strengthen the West Island community together.

Together, we continue to **build a stronger, more resilient, inclusive and healthy West Island community for all.**



# SUPPORT VULNERABLE & MARGINALIZED POPULATIONS

We are proud to support 12 community organisations whose primary purpose is to **address the unique needs, challenges, and rights of those who are disadvantaged, underserved, or excluded within society**. These groups offer a diverse range of activities that span from speaking up for their rights, to spreading knowledge, developing independence and empowerment, and providing essential resources, all while creating havens of understanding and acceptance. These groups strive to remove inequalities and create a more equitable and compassionate environment for all.



## DID YOU KNOW?

In the last year alone, **MORE THAN** 12,000 West Island residents were helped by these groups.



# FOSTER HEALTHY BODIES & MINDS

In the aftermath of the pandemic, one of the most pressing issues facing society is the deterioration of our mental health. Mental Health Research Canada recently reported that 56% of struggling Canadians are **not** getting the mental health help they need.

Thanks to our generous donors, we were able to increase our overall funding in this area. Groups have shared that thanks to the increase in our funding, they didn't have to turn clients away.



Amis de la santé mentale  
Friends for Mental Health



WICWC.ORG



L'Équipe  
Entreprise



## DID YOU KNOW?

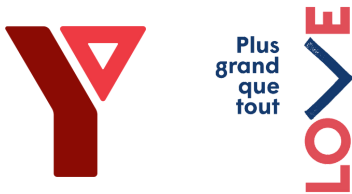
**ONE** in **FIVE** people will be affected  
by a mental health issue in their lifetime.



# DEVELOP STRONG, RESILIENT CHILDREN & TEENS

These 12 community organisations **support the physical, emotional, social, and psychological well-being of the West Island’s youth.** Their efforts are made up of a wide range of activities that promote growth, skill-building, emotional intelligence, and working with extended families if needed.

These services are essential to shaping the next generation's ability to thrive and contribute positively to our communities and society.



“ Thanks to Community Shares’ support, *we grew our reach and impact* by increasing our on-site high school presence and building trust with at risk teens. ”



# EMPOWER WOMEN

Femicides have been sharply on the rise in Canada. Since 2019, there has been a **27% increase** in women who were killed by men **and** sexual assault is among the least likely crimes to be reported to the police.

These groups are **dedicated to improving the lives of women** by offering educational services, advocating for their rights, providing counselling and navigational care, providing shelter, and facilitating reintegration.

## DID YOU KNOW?

**80%** of sexual assaults against women are committed by someone who knows them.



# SUPPORT GREEN INITIATIVES

## DID YOU KNOW?

The Ecomuseum protects the well-being of animals in their care through environmental education and wildlife conservation.



Thanks to our supporters in this area, we welcomed **a new group in this area – FabZone**. Their mission is to provide students, artisans, entrepreneurs and makers of all ages and skills access to a workspace, tools and training in a fun and collaborative atmosphere.

They are committed to repairing, reusing, repurposing, and recycling whenever possible. All their furnishings and most of the equipment were either donated or acquired by thrifting.





# PROVIDE BASIC NECESSITIES

No one is immune to inflation. We read about it in the news every day – **the costs of basic needs are soaring**. The data is clear – the shortage of affordable housing is having a significant impact on poverty levels and in turn, food insecurity is on the rise.

Last year, we were able to increase our funding to these organisations so that they could better deal with the rising demand from West Islanders in need.



## DID YOU KNOW?

Over 80% of West Island residents have very limited access to fresh fruits and vegetables.

# SNOWSUIT CAMPAIGN

One of the tragic impacts of today's inflation is that many low-income families are struggling to afford warm winter clothing for their children.

Thanks to our partners at BMO Bank of Montreal and other generous donors, we started a new fundraising tradition to provide brand-new snowsuits, hats, neck warmers and warm mittens to vulnerable West Island children.

**All kids should build forts and snowmen, make snow angels, and have snowball fights!**







# CREATING LASTING RELATIONSHIPS

At Community Shares, we believe it takes more than just funding to make a meaningful difference in the community. We work hard to create lasting partnerships with the more than 40 community organisations we support.

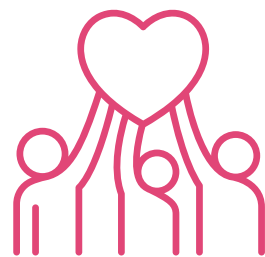


We nourish these partnerships by offering



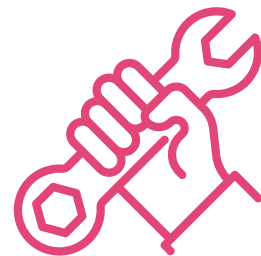
## 1. Funding

Red & White Gala, community breakfast, and more...



## 2. Networking

AVON nights, introductions of groups, and more...



## 3. Capacity Building

Board recruitment, skills development, and more...

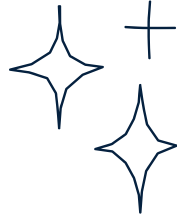
**We believe these efforts do more than help each group succeed on their own; they help all groups thrive, collaborate effectively, and achieve shared goals.**





# EVERYONE CAN HELP, HERE'S HOW

*I can donate  
on-line or mail a  
cheque*



*I'm going to  
attend a  
Community Shares  
event*



*I'm going to  
become a  
monthly donor*

*I'm good at planning,  
I'll plan my own  
fundraiser*

*I'm going to find  
out if my employer  
has a workplace  
campaign*

*I will leave  
an amount  
in my will*

*I'll ask if  
my employer will  
match my donation*

*Hmmmm ... I don't  
know what to do ...  
I'll call the Community  
Shares team*

*I'm going to tell  
my friends  
about Community  
Shares*

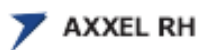
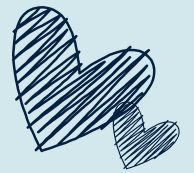
*I'm going to learn  
more about the  
groups Community  
Shares supports*

*I'm going  
to follow Community  
Shares on social media*





# OUR PARTNERS





# JOIN US FOR THE NEXT 25 YEARS



We are proud to celebrate the transformative impact 25 years of giving has had throughout the West Island. However, as we reflect on this journey, we know that our work is far from over. **Each year we start anew.**

We also learned that while our future is constantly changing; our mission does not – we remain steadfast in our commitment to building a strong, resilient, inclusive and healthy West Island.

To assist us, we are asking for your help to secure the future and continue to invest in us. Together, we can face uncertainty with resilience, turn challenges into opportunities, and build a better tomorrow for all.

Thank you for continuing to be part of our journey, and for helping us continue the legacy of having a lasting impact on the lives of all West Islanders.

## CONTACT US



(514) 695-8694 ext. 103



[info@partageaction.ca](mailto:info@partageaction.ca)



partageaction

West Island Community Shares